



Our Delivered Projects:



Spring Meadows, Gr. Noida



Sadar Bazaar, Gr. Noida

Ongoing



Spring Homes, Gr. Noida West



SUBLIME REALTECH PRIVATE LIMITED

Site Office: GH-03B, Sector-12, Greater Noida (West), Gautam Buddha Nagar, Uttar Pradesh, 201306

E.: info@springelmas.com | W. www.springelmas.com

RERA Reg. No.: UPRERAPRJ274689 • GSTIN: 09AAVCS7749C1ZN

*Conditions apply. **DISCLAIMER** : All buildings, information, specification, etc. are tentative and subject to variation and modification by the company or the competent authorities sanctioning such plans. Images are for representative purpose only. *1 sq. mtr. is equal to 10.76 sq. ft. Note: The details of approvals may be seen in our office.

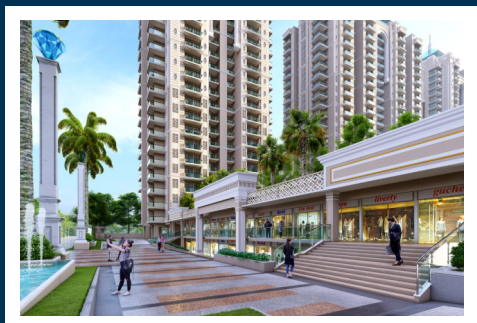




SPRING
ELMAS
shine bright

Greater Noida (West) have a well-planned neighbourhood and pocket-friendly market with a variety of developer's options. For potential purchasers, Greater Noida (West) is the most desirable location. As a result, the Greater Noida (West) Real Estate Market has attracted major companies. Greater Noida (West) is seeing a lot of building big brands and making this location a prime location.

Experience the difference of living in a universe of your own devoted to your aspirations. Spring Elmas, premium 3 & 4 BHK & Duplex residential project from Spring Group, are homes that promise to multiply your joy like never before. With complete serenity and comfort, these beautiful and luxurious modern homes offer vast open space with lush green surrounding, leisure amenities and a lot more good things to surprise you everyday. Being strategically located, Spring Elmas offers easy accessibility and connectivity, ensuring that the world around you is really closer. So enjoy staying at an unbeatable location that is your own universe.





SPECIFICATIONS

BALCONY

Floor: Ceramic tiles ISI Mark
Walls: Permanent Finish
Ceiling: Paint with Base putty

STUDY/ SERVANT ROOM

Floor: Vitrified/ Ceramic Tiles
Walls: Permanent Finish Fixture & fitting : Switches ISI
Ceiling: POP Cornice/ Paint with Base Putty partly false ceiling

BED ROOM

Floor: Vitrified tiles
External Doors & Windows: UPVC
Fixture & fitting : Switches ISI
Walls: OBD Paint ISI Mark
Main Door: Hard wood Frame & Skin Moulded Paneled door / Flush door shutters
Ceiling: POP Cornice/ Paint with Base Putty partly false ceiling

TOILET

Floor: Anti Skid Vitrified Tiles ISI Mark
External Doors & Windows: UPVC
Fixture & fitting : Switches ISI & Standard Chinaware fixture & fitting for geyser water supply (CP fittings ISI Mark)
Walls: OBD Paint ISI Mark
Main Door: Hard wood Frame & Skin Moulded Paneled door / Flush door shutters
Ceiling: POP Cornice/ Paint with Base Putty partly false ceiling

KITCHEN

Floor: Anti Skid Vitrified Tiles ISI Mark
External Doors & Windows: UPVC
Fixture & fitting : Udaipur Green
Marble Top Counter & fitting for R.O System & Geyser Water supply fittings ISI Mark
Walls: OBD Paint ISI Mark
Main Door: Hard wood Frame & Skin Moulded Paneled door / Flush door shutters
Ceiling: POP Cornice/ Paint with Base Putty partly false ceiling
Utility: Single Sink stainless steel ISI Standard

DRAWING ROOM

Floor: Vitrified Tiles ISI Mark
External Doors & Windows: UPVC
Fixture & fitting : Switches ISI
Walls: OBD Paint ISI Mark
Main Door: Hard wood Frame & Skin Moulded Paneled door / Flush door shutters
Ceiling: POP Cornice/ Paint with Base Putty partly false ceiling

MASTER BEDROOM

Floor: Wooden laminated
External Doors & Windows: UPVC
Fixture & fitting : Switches ISI
Walls: OBD Paint ISI Mark
Main Door: Hard wood Frame & Skin Moulded Paneled door / Flush door shutters
Ceiling: POP Cornice/ Paint with Base Putty partly false ceiling

LIFT/LOBBY

Floor: Combination of different colors marble/ stone in pattern
Walls: Granite tiles cladding & Texture Paint
Ceiling: Paint with Base putty

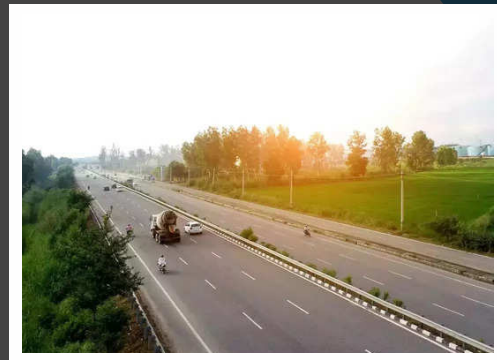




Yatharth Hospital



Near Metro Station, Sector 76, Noida



NH-24



Fortis Hospital Sector-62, Noida

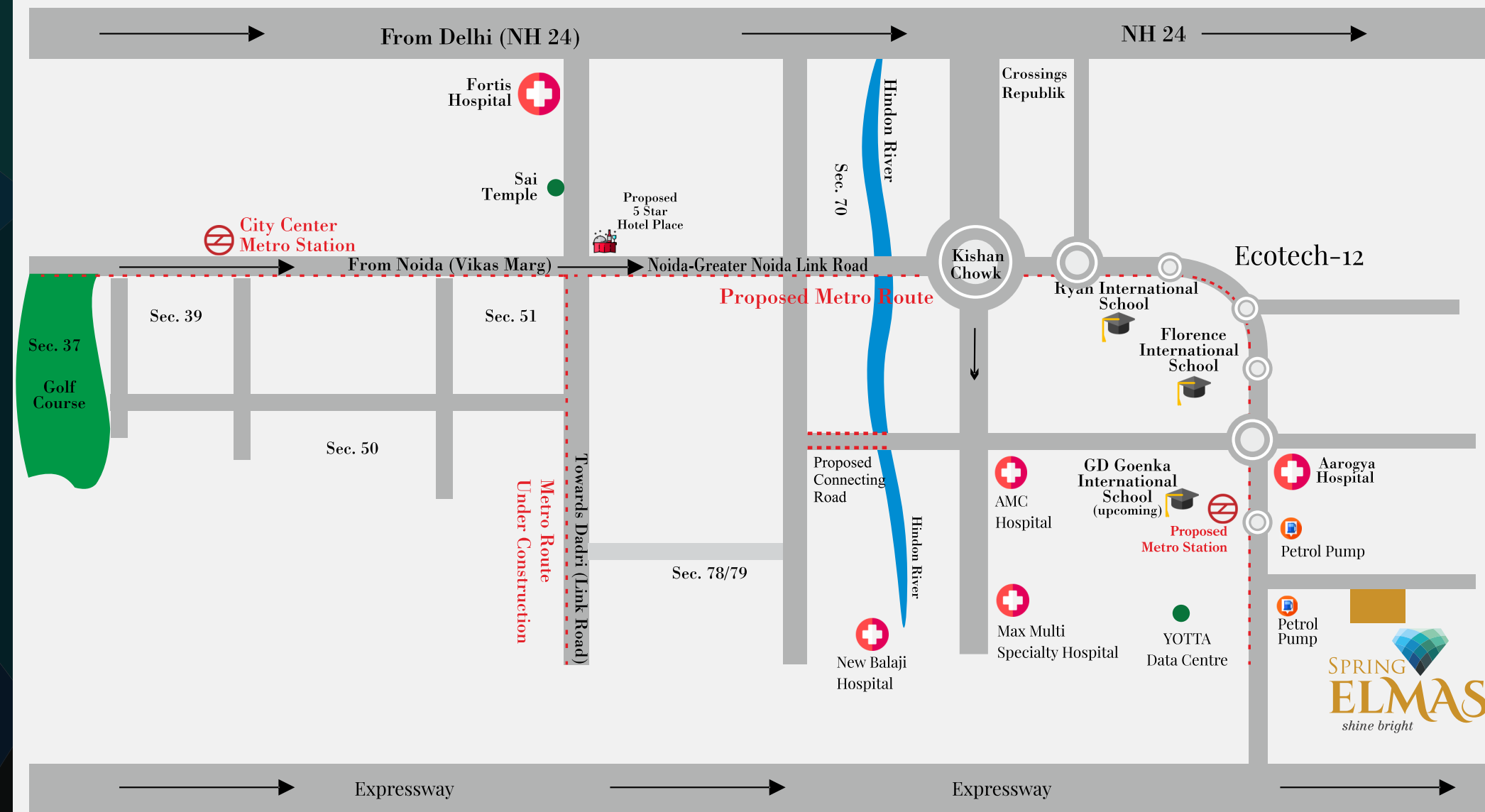
Spring Elmas is located at Greater Noida (West) and enjoys easy access from delhi NCR. A number of schools, hospitals and malls are within a short driving distance. The Proposed metro strengthens the connectivity further to the rest of the places.



Location Advantages:

- 200 meter distance from proposed metro
- 10 Minutes drive to FNG Expressway
- 5 Minutes drive to Yatharth Hospital
- 5 Minutes drive from Sai Mandir
- 10 Minutes drive to NH-24
- 5 Minutes drive to city center mall at kisan chawk
- 10 Minutes drive to the nearest metro station in Sector 76
- 15 Minutes drive to Fortis Hospital and Kailash Hospital
- Army Golf Club just 2 km away

Location Map

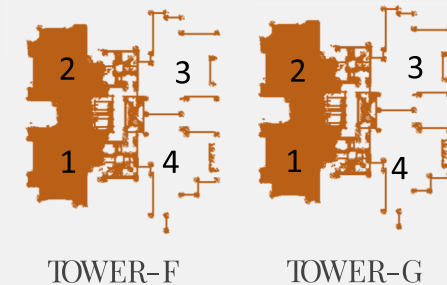
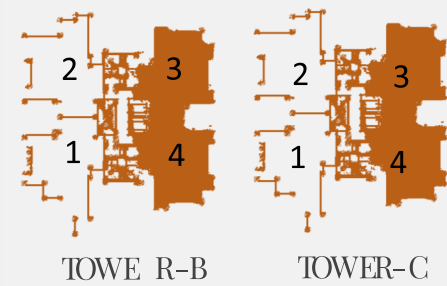
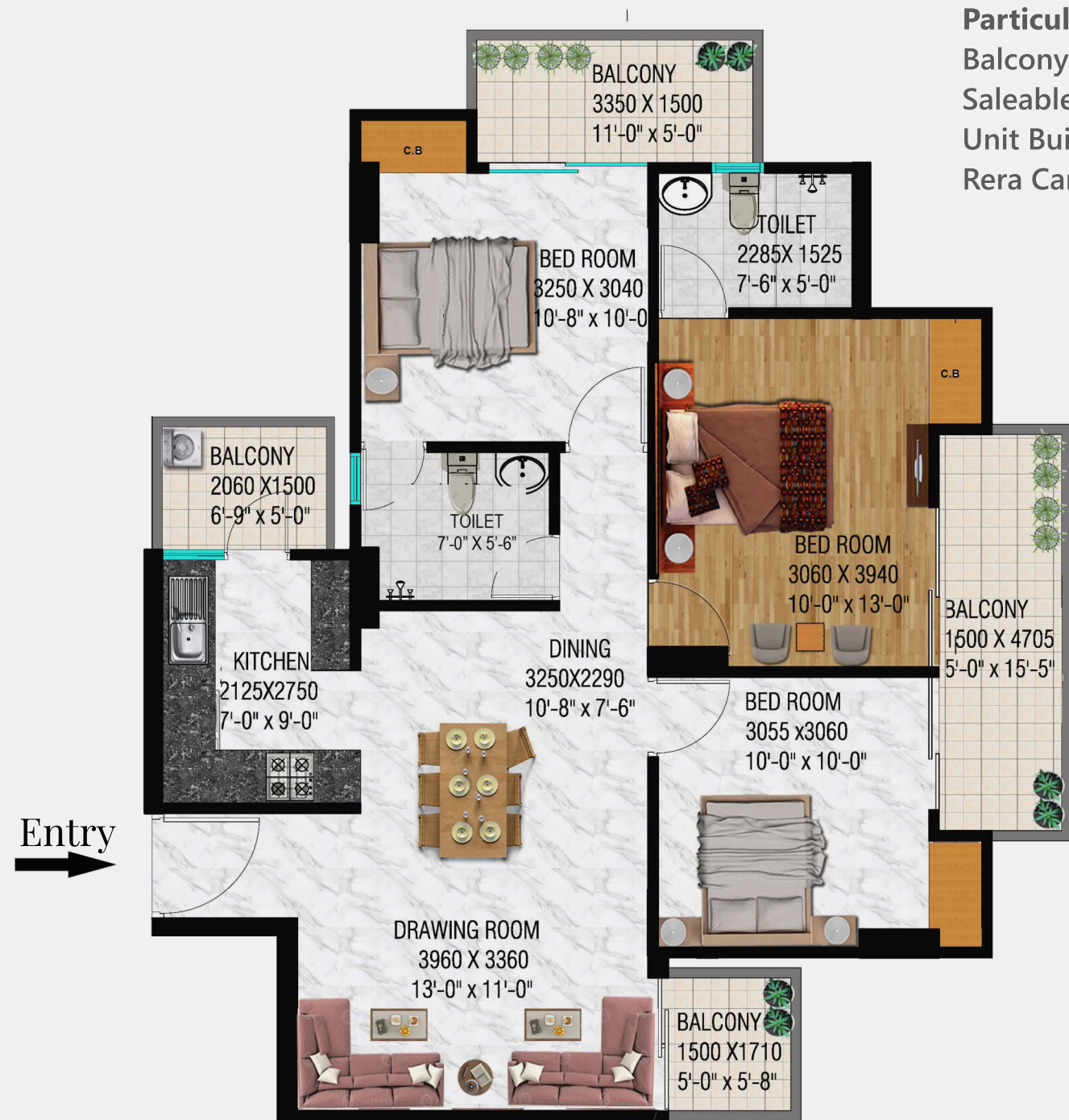


Map Not to scale

Unit Plan : 1355

TOWER-B,C,F,G
UNIT PLAN - TYPE -6
3 BHK + 2T

Particulars	:	Sq.ft.
Balcony Area	:	193.78 sq.ft.
Saleable Area	:	1355 sq.ft.
Unit Built up Area	:	1039.35 sq.ft.
Rera Carpet Area	:	793.46 sq.ft.

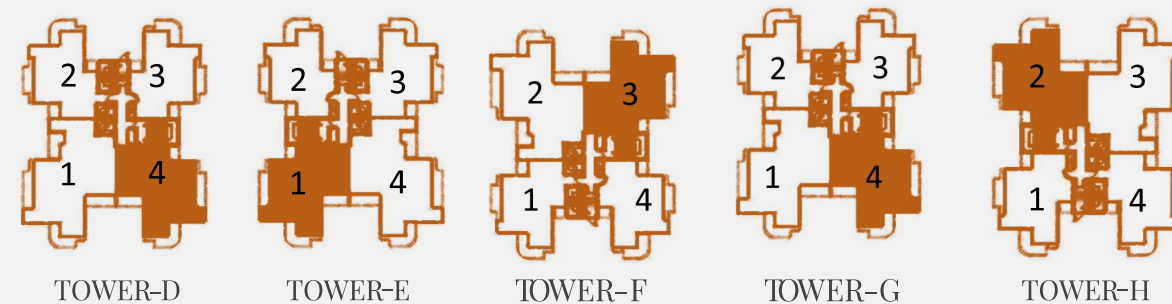
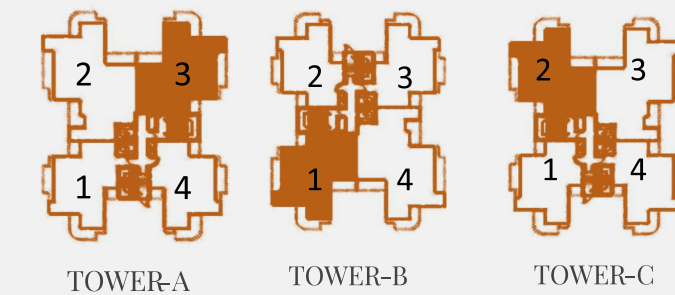
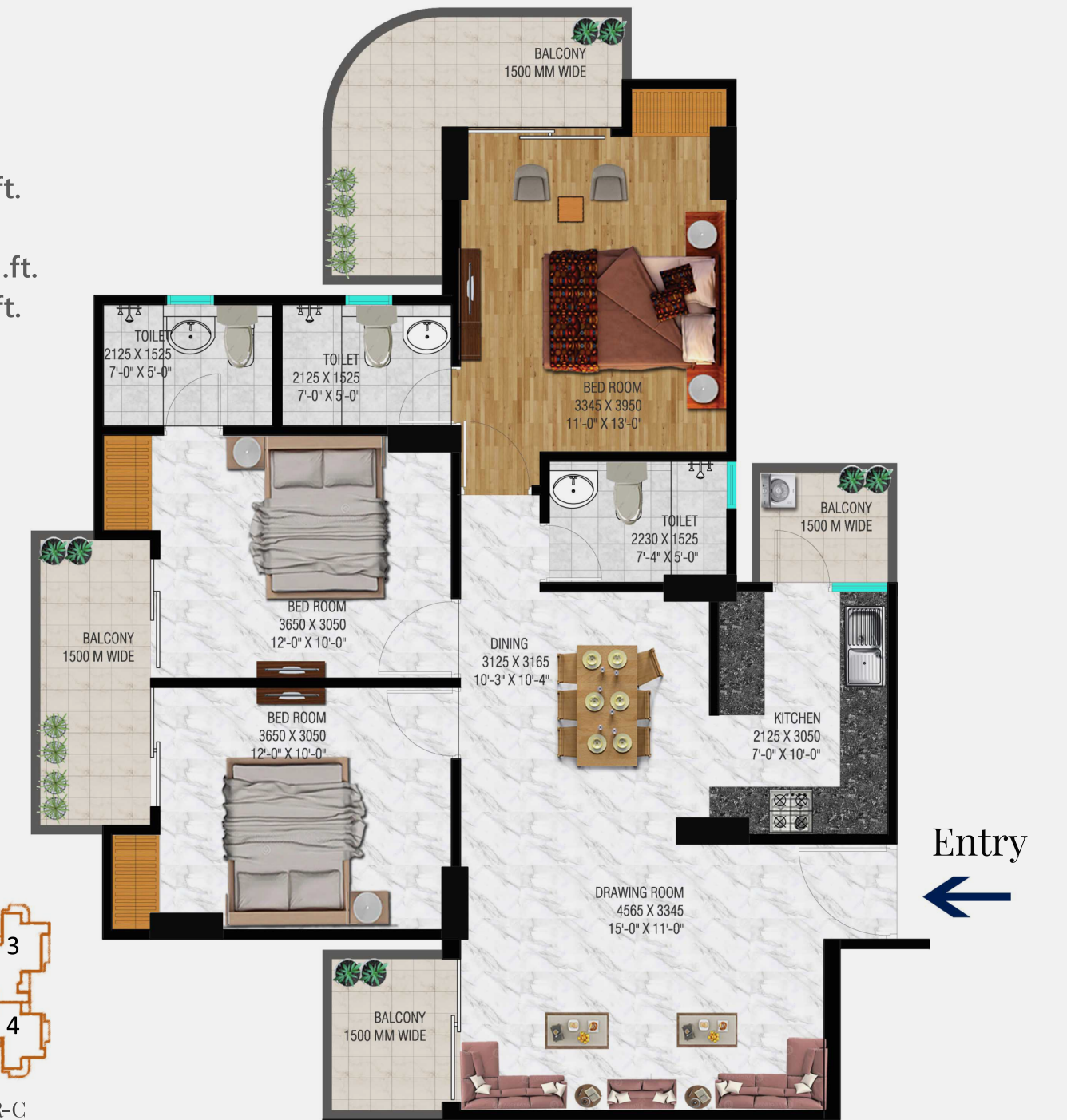


Note : Sizes In Feet/inches Are Approximate

Unit Plan: 1580

TOWER-A, B, C, D, E, F, G, H
UNIT PLAN - TYPE -5
3 BHK + 3T

Particulars	:	Sq.ft.
Balcony Area	:	223.13 sq.ft.
Saleable Area	:	1580 sq.ft.
Unit Built up Area	:	1200.66 sq.ft.
Rera Carpet Area	:	919.28 sq.ft.

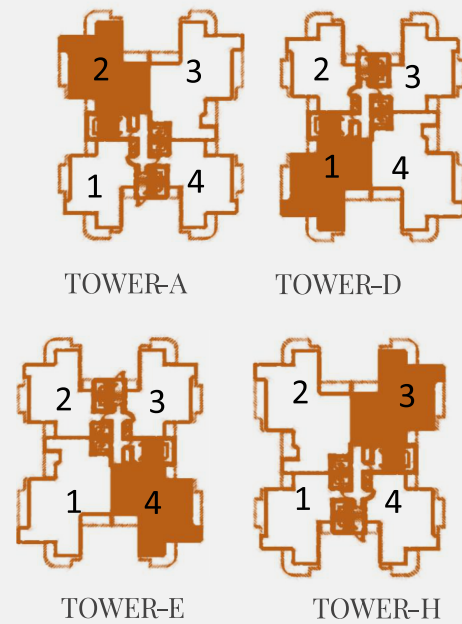
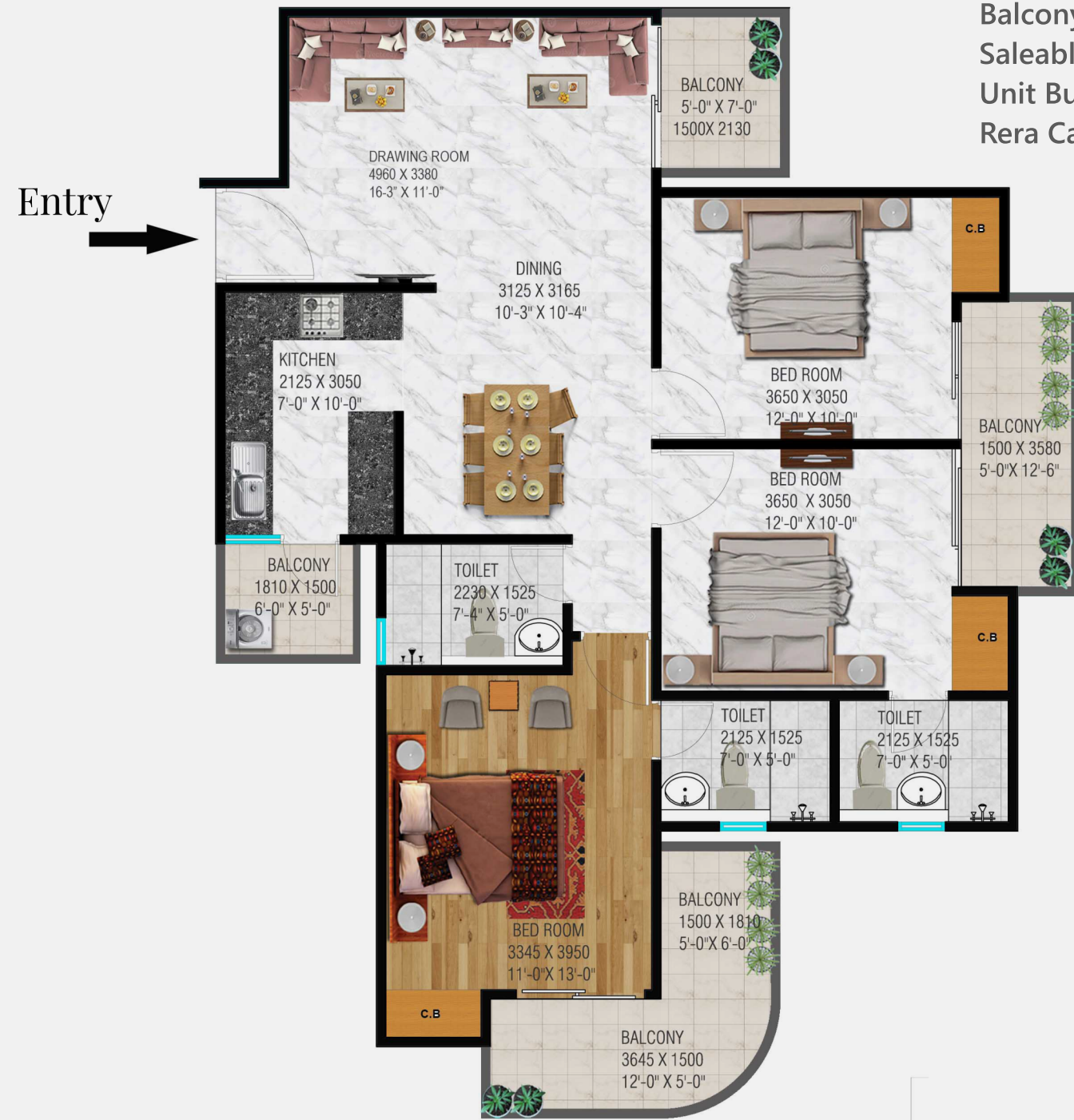


Note : Sizes In Feet/inches Are Approximate

Unit Plan: 1600

TOWER-A,D,E,H
UNIT PLAN - TYPE -3
3 BHK + 3T

Particulars	:	Sq.ft.
Balcony Area	:	223.13 sq.ft.
Saleable Area	:	1600 sq.ft.
Unit Built up Area	:	1210.74 sq.ft.
Rera Carpet Area	:	929.42 sq.ft.

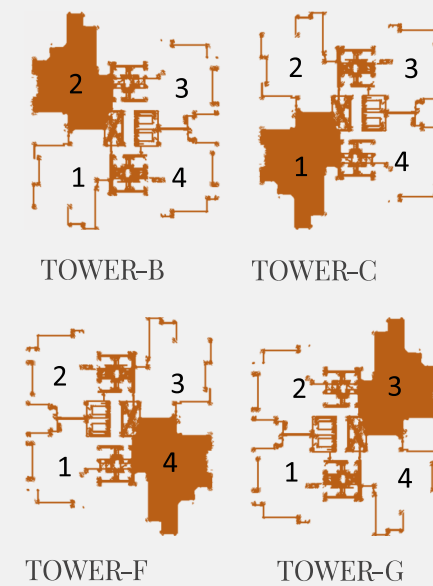
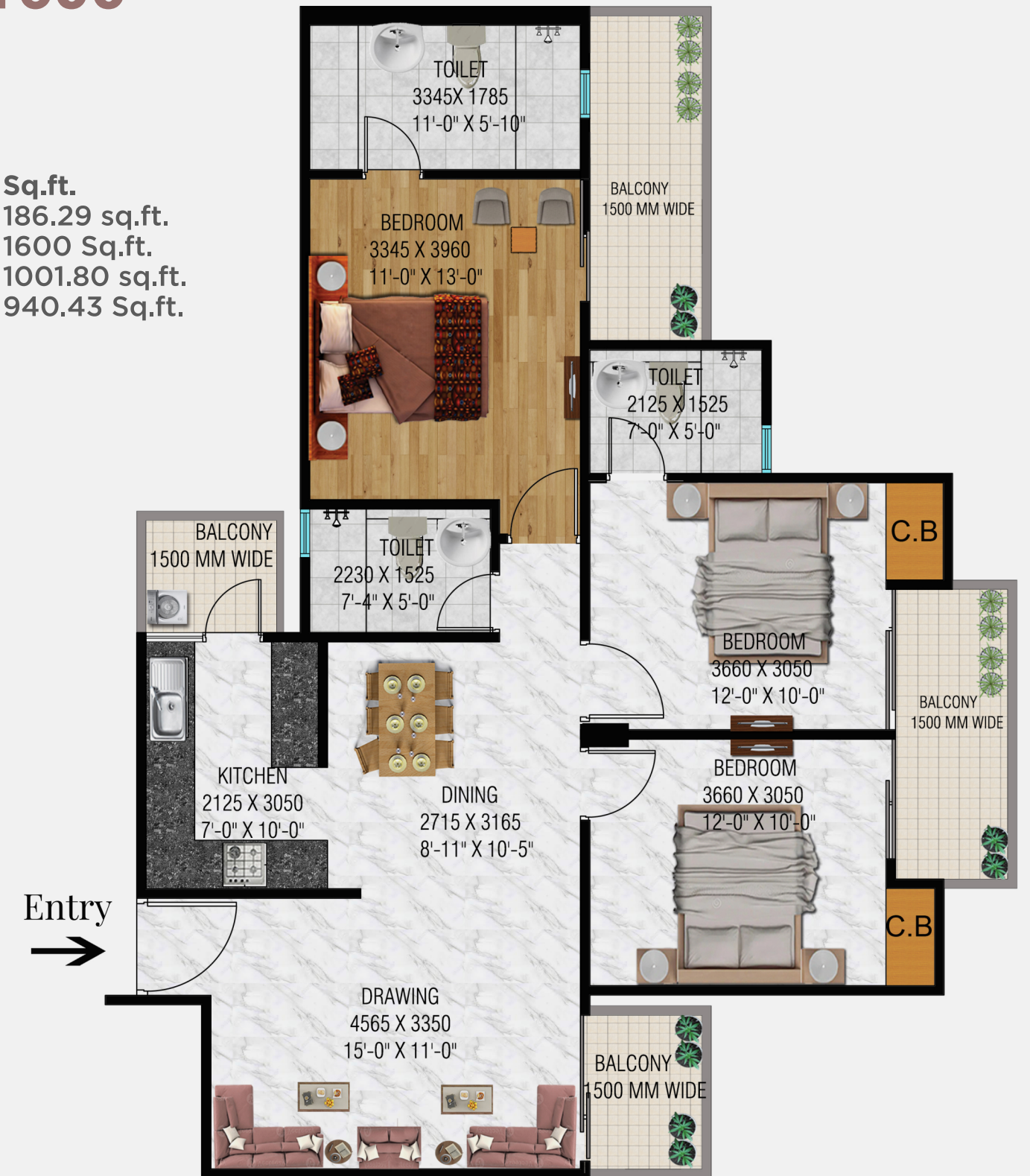


Note : Sizes In Feet/inches Are Approximate

Unit Plan: 1600

TOWER-B,C,F, G
UNIT PLAN - TYPE -4
3 BHK + 3T

Particulars	:	Sq.ft.
Balcony Area	:	186.29 sq.ft.
Saleable Area	:	1600 Sq.ft.
Unit Built up Area	:	1001.80 sq.ft.
Rera Carpet Area	:	940.43 Sq.ft.

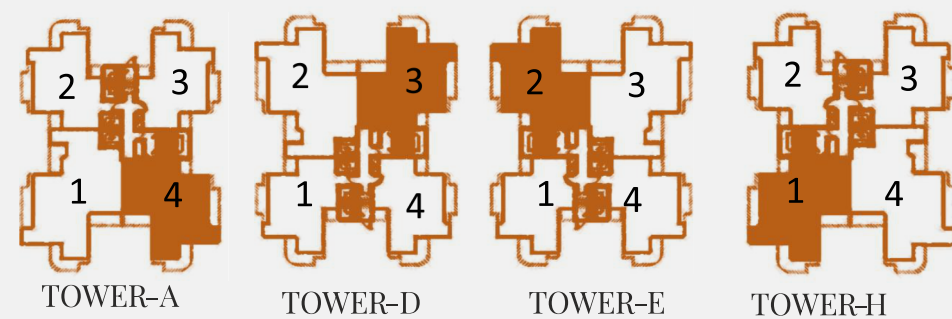


Note : Sizes In Feet/inches Are Approximate

Unit Plan: 1895

TOWER-'A,D,E,H
UNIT PLAN- TYPE-2
3 BHK+ 3T +STUDY

Particulars	:	Sq.ft.
Balcony Area	:	251.350 sq.ft.
Saleable Area	:	1895 sq.ft.
Unit Built up Area	:	1423.32 sq.ft.
Rera Carpet Area	:	1109.74 sq.ft.

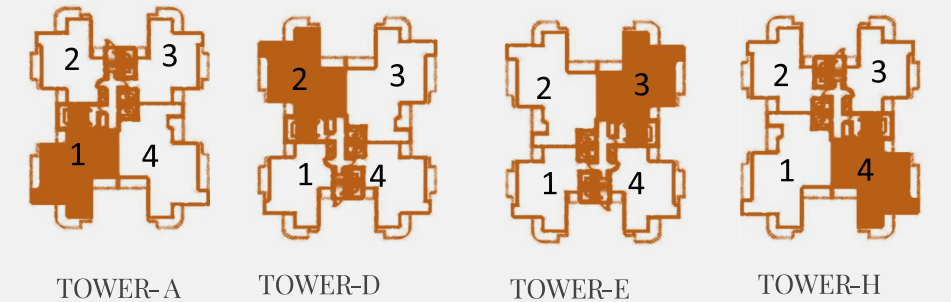


Note : Sizes In Feet/inches Are Approximate

Unit Plan: 2450

TOWER-A,D,E,H
UNIT PLAN - TYPE -1
4 BHK+ 5T +SERVANT

Particulars	:	Sq.ft.
Balcony Area	:	303.55 sq.ft.
Saleable Area	:	2450 sq.ft.
Unit Built up Area	:	1828.57 sq.ft.
Rera Carpet Area	:	1445.08 sq.ft.





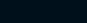
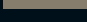
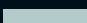

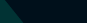

Note : Sizes In Feet/inches Are Approximate

Landscape Plan

LEGEND: LANDSCAPE ELEMENTS (RESIDENTIAL)

- | | |
|----------------------------|---------------------|
| A. ENTRY PLAZA | N. GAZEBO |
| B. EXIT PLAZA | O. OPEN GYM |
| C. ENTRANCE LOBBY/DROP-OFF | P. JOGGING TRECK |
| D. SENIOR CITIZEN ZONE | Q. CYCLING TRACK |
| E. SWIMMING POOL | R. AROMA GARDEN |
| F. KID'S POOL | S. HERBAL GARDEN |
| G. COMMERCIAL PLAZA | T. REFLEXOLOGY PATH |
| H. PARTY LAWN | U. HEALING GARDEN |
| I. BADMINTON COURT | V. SEATING GARDEN |
| J. HALF BASKETBALL COURT | W. WATER BODY |
| K. KID'S PLAY AREA | X. RAMP |
| L. MEDITATION AREA | |
| M. SKATING RING | |

UNIT TYPES

- | | | |
|-------------------|---|--------------------|
| Type - 1 2450 |  | Tower A - Amber |
| Type - 2 1895 |  | Tower B - Beryl |
| Type - 3 1600 (A) |  | Tower C - Coral |
| Type - 4 1600 (B) |  | Tower D - Diamond |
| Type - 5 1580 |  | Tower E - Emerald |
| Type - 6 1355 |  | Tower F - Fluorite |
| |  | Tower G - Garnet |
| |  | Tower H - Heliodor |



*Conditions apply. **DISCLAIMER** : All buildings, information, specification, etc. are tentative and subject to variation and modification by the company or the competent authorities sanctioning such plans. Images are for representative purpose only. *1 sq. mtr. is equal to 10.76 sq. ft. Note: The details of approvals may be seen in our office.